



# Lone Star Times

July 2015

Volume 31~2

Membership 417

[www.chapter124.org](http://www.chapter124.org)

National Association of Watch and Clock Collectors  
Lone Star Chapter 124 Grapevine, Texas



Art Deco France 1920s

## IN THIS ISSUE

President's Message from Kelsey Downum

Classes and Events

Special One Day

Photo Essay on Art Deco Design

*"An Educational Group Dedicated to Preserving and Understanding Horology"*





# Lone Star Times

National Association of Watch and Clock Collectors  
Lone Star Chapter 124 Grapevine, Texas

*"An Educational Group Dedicated to Preserving and Understanding Horology"*

July 2015

Volume 31-2

Membership 417

[www.chapter124.org](http://www.chapter124.org)

## *President's Message*

Dear Members and Friends of Lone Star Chapter 124:

Welcome to the official beginning of another year for Lone Star Chapter 124. I am privileged to begin my service to the Chapter as your President. My thanks go to John Erickson (Past President) and to last year's Board for their tireless efforts over the year. With the passing of the torch comes a much clearer understanding of the challenges ahead – especially as we move closer to hosting the 2017 NAWCC national convention. You can be sure that the new Board and I are already hard at work to meet these challenges.

For those that could not attend the annual business meeting on June 6<sup>th</sup>, it is my pleasure to introduce the new officers - Kelsey Downum (President), Ronnie Mathis (Vice President), and Evelyn Slough (Secretary/Treasurer). The new Board includes continuing members: M. Dee Koch (Education Director), John Acker (Director-at-Large), and Sam Creech (Director-at-Large). Newly elected members include: John Evans (Mart Director), Evelyn Slough (Secretary/Treasurer), and Bruce Wooldridge (Convention Director). Pam Tischler rounds out the Board as Past President. You will find contact information for all Board members on page 6 of this newsletter.

You may remember that both Evelyn Slough and Bruce Wooldridge have served the Chapter previously - Evelyn as President (2011-2013) and Bruce as Vice President (2010-2011) and Secretary/Treasurer (2006-2010). The new Board is lucky to have the benefit of their collective experience and Chapter wisdom. The Board also welcomes newcomer John Evans. John has extensive experience with other non-profit groups and is keen to lend his knowledge, perspectives and horological experience to the Board.

Committee Chairs for 2015-2016 and their contact emails are as follows:

Advert. & Recruitment:	E.K. Wilson	(2jwilson@flashnet)
Awards:	Pam Tischler	(fswprogram@verizon.net)
Auctions:	John Evans	(j.m.evans@sbcglobal.net)
Education:	M. Dee Koch	(mdkoch@att.net)
Museum:	John Acker	(jsatex@att.net)
Membership:	Gene Meysenburg	(gm1000@prodigy.net)
National Convention:	John Acker	(jsatex@att.net)
Newsletter:	Peter Crum	(pjcrum20@gmail.com)
Nominating:	John Erickson	(john.erickson7@verizon.net)
Bella's Traveling Exhibit:	Evelyn & Hugh Slough	(eve.slough@sbcglobal.net)

Should you have questions or comments that pertain to any of these areas, please contact the individual Chairs directly.

Chapter of the Year 2013-2010-2005-2001-1998-1996





# Lone Star Times

[www.chapter124.org](http://www.chapter124.org)

*President's Message continued...*

## **AUGUST 8<sup>th</sup> ONE-DAY. OLDEN YEAR MUSICAL MUSEUM 1050 N. Duncanville Rd., Duncanville, TX**

Everyone is invited to a special One-Day & Mart on Saturday, August 8<sup>th</sup> at the OLDEN YEAR MUSICAL MUSEUM (1050 N. Duncanville Rd., Duncanville, TX) just off of I-20 and Duncanville Rd. The Museum has graciously agreed to throw their doors open to the Chapter prior to opening to the public. In other words, you are guaranteed to get a behind-the-scenes visit to a truly unique museum.

The museum is sponsoring this one-day event as a way of saying thank you to several of our Chapter members - Bill Edwards, Chuck Edwards, Mike Granderson, Joe Richards, and Bruce Wooldridge - who helped restore and install the museum's 19<sup>th</sup> Century mechanical tower clock. In addition to seeing the tower clock, Chapter members also can see more than 500 musical machines (all in working order). The collection ranges from 18<sup>th</sup> century mechanical music boxes and machines (many with clock-like mechanisms) to an orchestral Aeolian organ that Mark Twain helped to develop. The meeting will begin with a Mart, coffee and donuts at 8AM. Following an introductory orientation in the museum's theater at 10AM, staff will lead tours, demonstrate the various types of musical machines, and answer questions. The cost is only \$10/person and a catered lunch will be provided. This One-Day meeting promises to be a unique experience with something new for everyone to see, hear and experience.

For those who haven't heard, the Chapter is holding Open Bench Workshops monthly now. The Founder's Building in Grapevine has been reserved from 4-9pm on the 1<sup>st</sup> Tuesday of each month for these workshops. So, bring your questions, ongoing projects, etc. for help or access to Chapter tools. Several members began the NAWCC skeleton project at the first evening Open Bench that met in July, but it's not too late to join in this group effort to begin making your own skeleton clock. Please check the Chapter calendar (<http://www.chapter124.org/calendar/calendar.html>) for additional course offerings. They include:

August:	1-2	Statue Repair and Refinishing
	4	Open Work Bench (4-9pm)
	14-17	F200 Fundamental Skills for Lathe/Clock Repair - Part I
September:	1	Open Work Bench (4-9pm)
	26-27	Beginning Pocket Watch Repair
October	6	Open Workbench (4-9pm)
	10	One Day Meeting and Mart
	16-19	CR100 Kitchen Clock Repair
	31- Nov. 1	Adjustment of Common Clock Escapements

Chapter of the Year 2013-2010-2005-2001-1998-1996





# Lone Star Times

[www.chapter124.org](http://www.chapter124.org)

## *President's Message continued...*

The last course of the year - Adjustment of Common Clock Escapements is new and will be taught by Mark Vozar and me (Kelsey Downum). If you want to learn how to fine-tune your escapements (recoil and deadbeat) so that your clocks run more efficiently, please see the class calendar for description and registration information.

One final note: Pam Tischler has arranged for the Chapter to hold an open house & Social at the Tips' home on Sunday, November 15, from 2:00-4:00 pm. If you want to see an outstanding clock collection, this would be the time and place. Coffee and cookies will be served. More details will follow in the October Newsletter.

I look forward to seeing you all at the August 8<sup>th</sup> One Day. Don't forget the different location - the Olden Year Musical Museum at 1050 N. Duncanville Rd. in Duncanville (NOT AT THE FOUNDER'S BUILDING IN GRAPEVINE). We will meet from 8am-noon. Cost is \$10 at the door and a great lunch is being planned.

*Kelsey Downum*







[www.chapter124.org](http://www.chapter124.org)

# CHAPTER INFORMATION

## *Board of Directors*



President *Kelsey Downum* 817-739-1543 [downumk@gmail.com](mailto:downumk@gmail.com)



Vice-President *Ronnie Mathis* 214-725-0017 [ronniemathis99@gmail.com](mailto:ronniemathis99@gmail.com)



Past-President *Pam Tischler* 972-612-0712 [FSWProgram@verizon.net](mailto:FSWProgram@verizon.net)



Secretary/Treasurer *Evelyn Slough* 972-283-5560 [eve.slough@sbcglobal.net](mailto:eve.slough@sbcglobal.net)



Convention Director *Bruce Wooldridge* 903-571-3093 [bawool@suddenlinkmail.com](mailto:bawool@suddenlinkmail.com)



Education Director *Dee Koch* 903-939-0950 [mdkoch@att.net](mailto:mdkoch@att.net)



Mart Director *John Evans* 214-662-4035 [j.m.evans@sbcglobal.net](mailto:j.m.evans@sbcglobal.net)



Director at Large *John Acker* 214-467-0076 [jsatex@att.net](mailto:jsatex@att.net)



Director at Large *Sam Creech* 972-251-9012 [s.j.creech@verizon.net](mailto:s.j.creech@verizon.net)

*"An Educational Group Dedicated to Preserving and Understanding Horology"*





# ONE DAY SPECIAL

[www.chapter124.org](http://www.chapter124.org)

CHAPTER 124 IS PRESENTING A SPECIAL "ONE DAY"

Pre-opening tour of the  
**OLDEN YEAR MUSICAL MUSEUM**

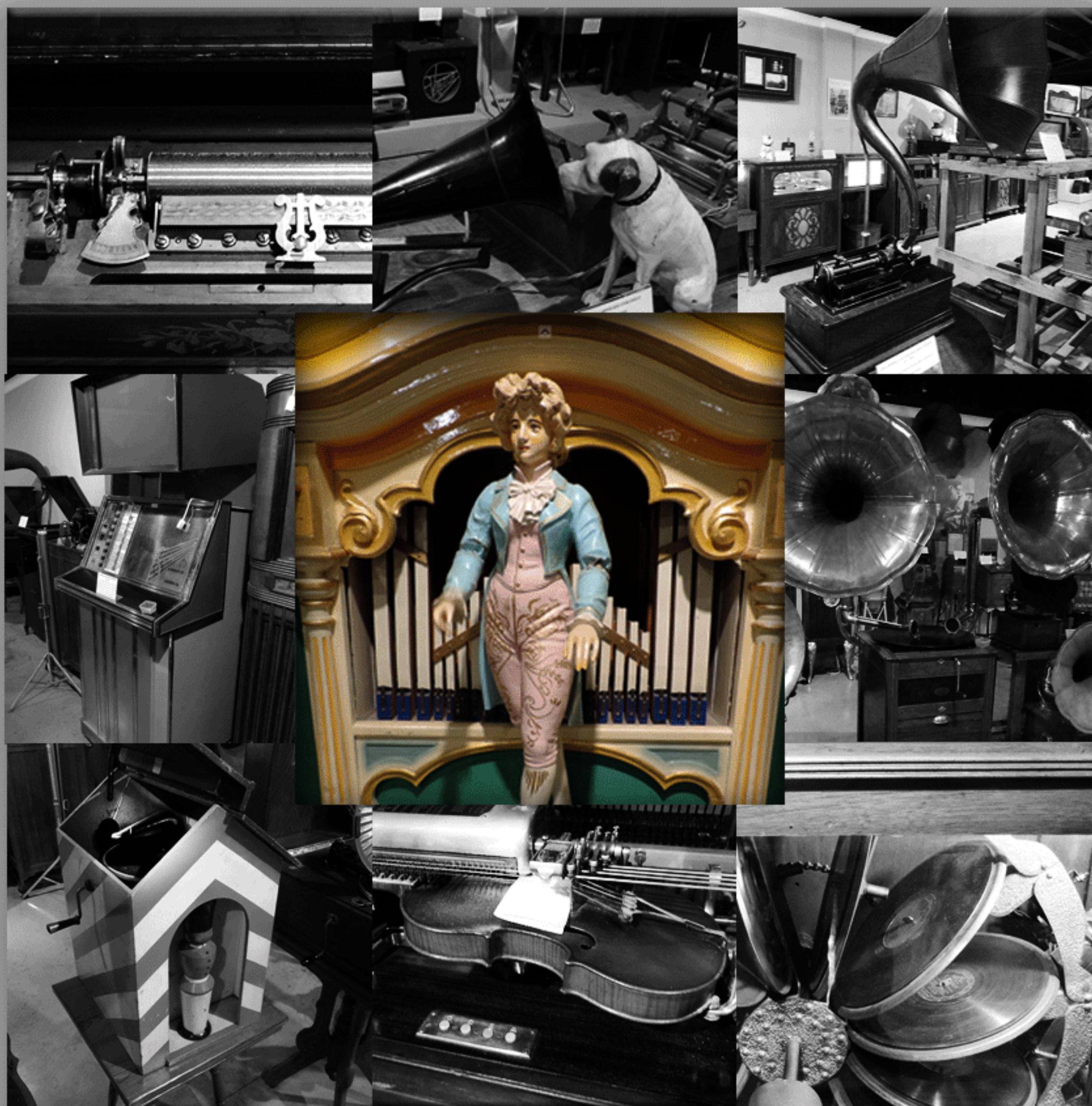
1050 N. Duncanville Road  
Duncanville, Texas

August 8th...8:00 AM-12:00

A special lunch will be served...\$10

There will be a MART & a Pre-opening tour.

*"This is a real treat for your eyes and ears...the music is incredible!"*



*"An Educational Group Dedicated to Preserving and Understanding Horology"*



# ART DECO DESIGN

Art Deco is the first original art form of the 20<sup>th</sup> Century. Starting just before WWI its maturity was recognized between 1920 and 1940.

The world was at war and had little time for decorative arts.

Fancier, Art Nouveau was fading out with its rich ornamentation, fine materials and superb craftsmanship. Greyhounds and gazelles and the female form with short hair and styles of clothing like the severe style of Coco Chanel replaced the floral motifs and inspiration from nature. The influence of the Orient was replaced by that of Africa. The discovery of King Tut's Tomb in 1922 added Egyptian style to Art Deco designs.

The curve was out and angles were in.

During the 1930s, Art Deco was used extensively for public works projects, railway stations, ocean liners (including the Île de France, Queen Mary, and Normandie), movie palaces, and amusement parks.

The austerities imposed by World War II caused Art Deco to decline in popularity. It was perceived by some as gaudy and inappropriately luxurious. A resurgence of interest began during the 1960s. Deco continues to inspire designers and is often used in contemporary fashion, jewelry, and toiletries.

In the United States, venerable clockmakers such as Ingraham, Seth Thomas, Waltham, and Telechron produced a large number of Art Deco clocks for the home. The SK141 electric kitchen wall clock by Ingraham had a black painted wood case with chrome trim. Seth Thomas made a green, faux-marble Catalin (a transparent cousin to Bakelite) alarm clock, as well as a mantel clock formed from a block of clear, gold-bubble-infused Lucite.

Waltham clocks were often framed in successive bands of marble or jade—some had silver numbers and hands. Telechron, a subsidiary of General Electric, was another company to make good use of Catalin, which it dyed in butterscotch hues (look for the Imp or mustache clock, so named for the top of its case). In the late 1920s, Telechron hired designer Paul Frankl to create the Modernique, which became known, derisively, as the \$50 clock after the stock market crash of 1929.

*From Clocks of the Art Nouveau and Art Deco Style 1891-1940*  
NAWCC Library

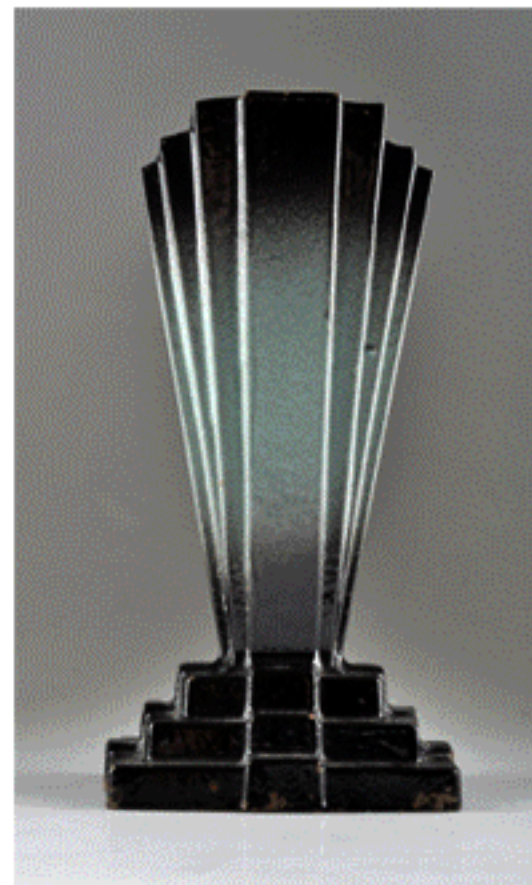
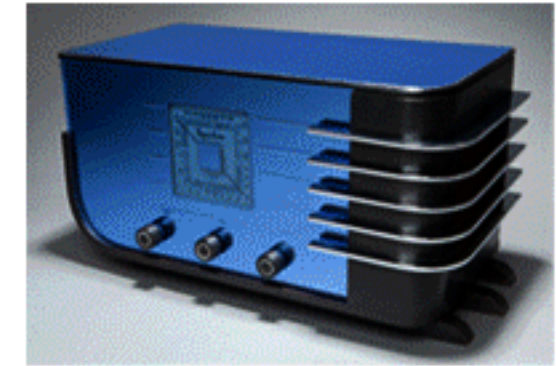
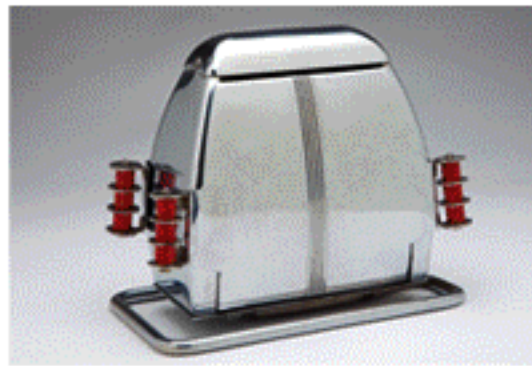
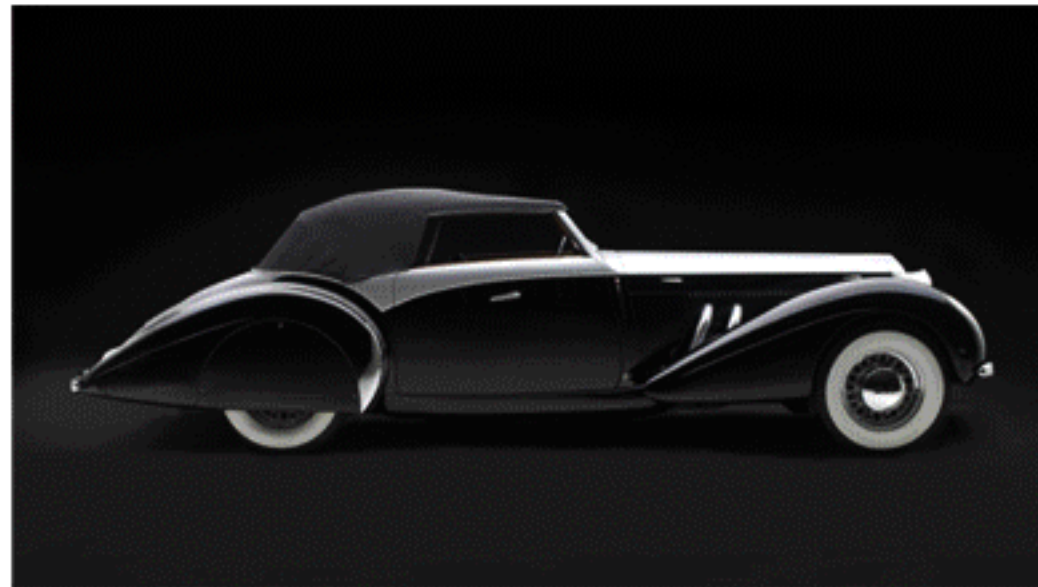




# ART DECO DESIGN

"Art Deco" is a style of art, design, and architecture, originating in Paris in the 1910s, and more popularized after World War I, during the "roaring" 1920s.

Art Deco's opulence, extravagance, and gaudy-ness defines perhaps the first truly global style, in an era of intra-war prosperity, and then depression.





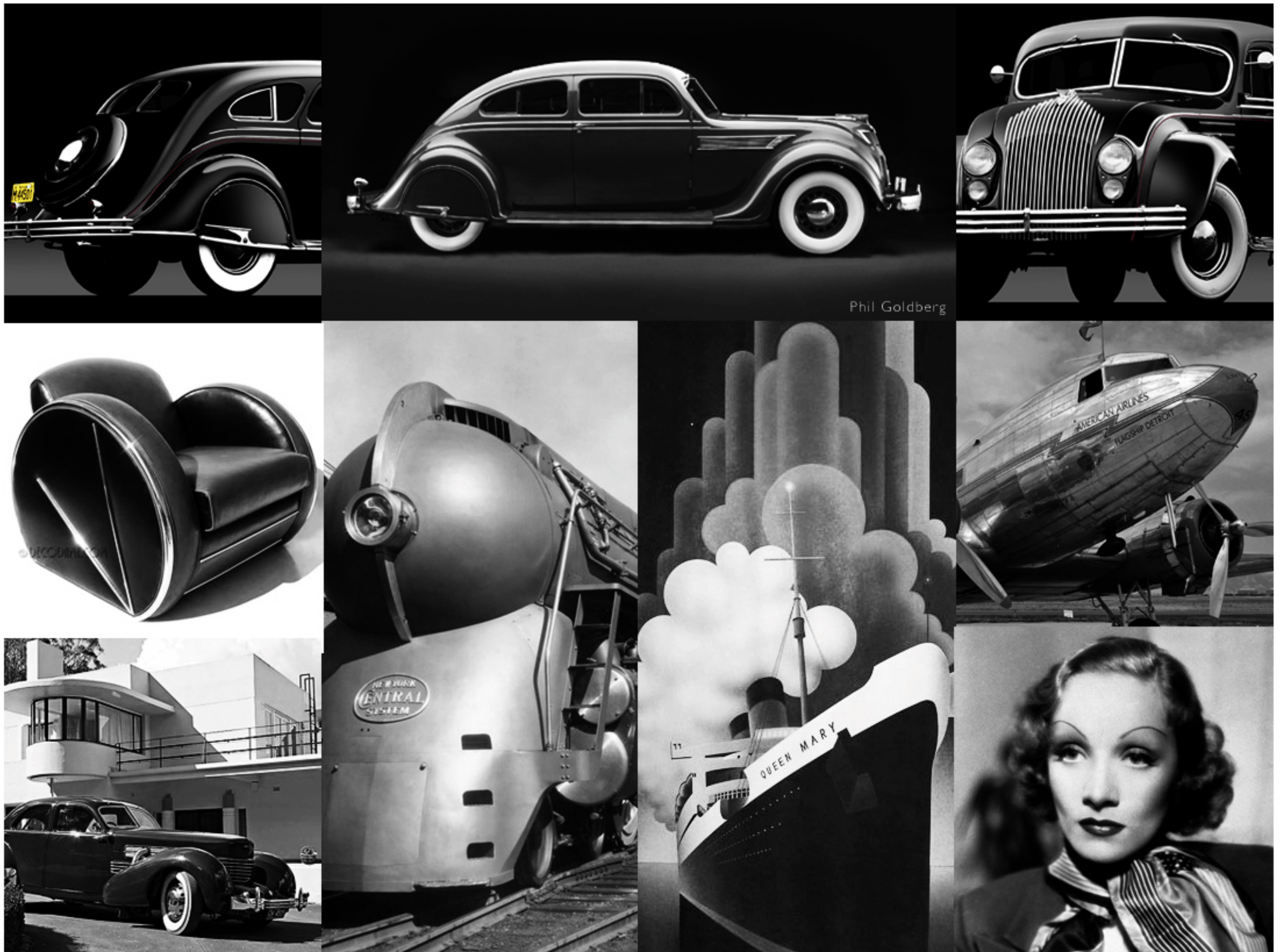
# ART DECO DESIGN

Drawing on bold shapes, rich colors and lavish ornamentation, Art Deco Design developed during rapid industrialization that was transforming culture. It is an eclectic style that combines traditional craft motifs with Machine Age imagery and motifs. During its heyday, Art Deco represented luxury, glamour, exuberance and faith in technological and social progress.

A style related to Art Deco is Streamline which emerged during the mid-1930s. Streamline was influenced by modern principles developed for aviation to reduce friction at high velocities. Designers applied these principles to cars, trains, ships even objects not intended to move as well as architecture and fashion.

One of the first production in this style was the Chrysler Airflow in 1933. It was unsuccessful commercially, but the beauty and functionality of its design set a precedent.

Streamlining quickly influenced automotive design and evolved the horseless Carriage into sleek vehicles with aerodynamic lines, symmetry and V shapes. It also influences products, art, fashion and of course clocks. These designs continued to be popular after World War II.







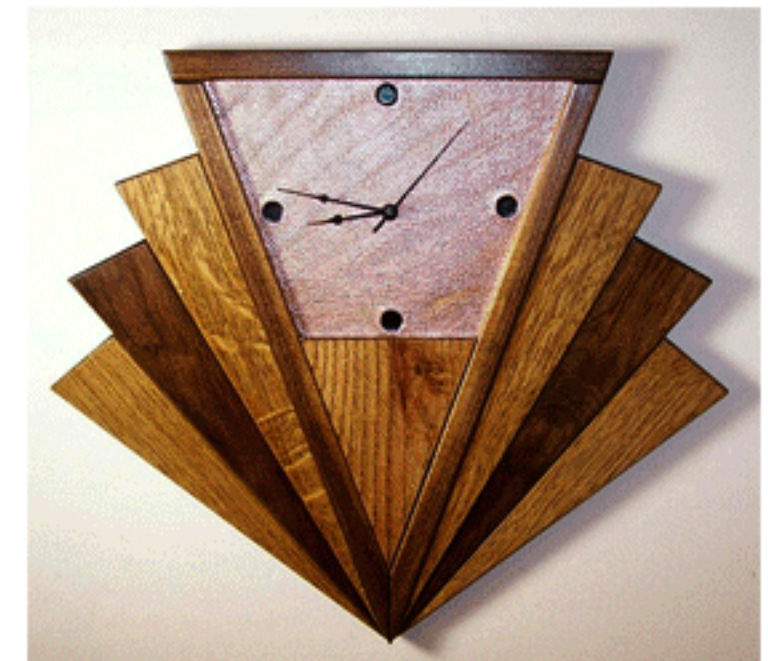
# ART DECO CLOCKS



Phil Goldberg



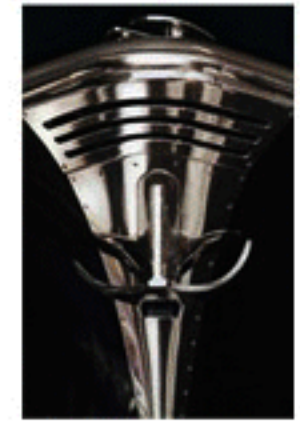
Art Deco was an art form in which America took an early lead. Clock makers presented a product often smaller in order to compete in a depressed worldwide market. The Depression and WWI had taken a toll on many areas of production.





# ART DECO DESIGN TODAY

The influence of Art Deco Design can be seen in many of today's designs from graphics to appliances to automobiles.  
Art Deco design was the use of geometric shapes, angles and color.  
It was progressive and promising of a new future.  
It was classy!



## LED ZEPPELIN







# EDITOR'S NOTES

[www.chapter124.org](http://www.chapter124.org)

These photos and the descriptions were sent in by Joseph Cohen from Pompano Beach, Fl. I will be visiting him and see his collection in October on a trip to Florida.

There were a lot of contributors for this article and I thank each of you for your assistance in putting this article together.

Phil Goldberg, friend, classmate and fellow designer, expert on Art Deco and automotive design. Pataluma, CA

Chapter 28's book,  
*Clocks of the Art Nouveau and Art Deco Style*

Sara Dockery & Nancy Dyer  
at the NAWCC Library  
for sending the book.

I thank the members of the board for sending their pics with their favorite clock.

## FRANCE

Period: Art Deco  
8-day platform  
escapement, bell striking  
Bronze and verde antica  
marble table clock  
Gold painted bronze  
Chinese figures holding  
clock  
Retailer by Ovington,  
New York  
Movement by Charles  
Hour, Paris 1900-1927  
After a Louis XV design  
by Etienne Le Noire, Paris



## FRANCE

Period: Art Deco  
8-day time piece with  
stylized

"Atlas supporting the  
Dial of the Clock"  
, ormolu and  
patinated bronze

Clockmaker: Gustave  
Descotes, Paris  
c. 1915-1925



## FRANCE

Period: Art Deco,  
Egyptian Revival,  
8-Day Bell Striking on  
a Black and White  
Marble Base with  
Kneeling Figures  
Maker: Lardopoyon,  
Paris, Brevette  
1922-1939



More to Come....Peter Crum 972-249-6049 [pjcrum20@gmail.com](mailto:pjcrum20@gmail.com)

"An Educational Group Dedicated to Preserving and Understanding Horology"





ADs

[www.chapter124.org](http://www.chapter124.org)



## Clocks of Yore

Fred Tischler

Clock Repair~Clock Restoration~Educator

Shop located in Plano, Texas

972-612-0712

[www.clocksofyore.com](http://www.clocksofyore.com)

NAWCC Star Fellow

Your **SHERLINE** Dealer

LATHES - MILLS - ACCESSORIES

PETE CRONOS

[ZIPPOMAN@USA.COM](mailto:ZIPPOMAN@USA.COM)

[PETESTOOLS.COM](http://PETESTOOLS.COM)

870-974-2583



## Atmos Clock Repair & Complete Restoration

**Floyd Ennis**

972-436-5724

AWCT Trained

One Year warranty



**CLOCK PARTS**

MADE NEW OR REPAIRED

Wheels, Pinions, Barrels

Richard Cox, CMC, CMBHI (29585)

**FENDLEY & COX'S CLOCK SHOP**

1530 Etain Road Irving, TX 75060

972-986-7698



"An Educational Group Dedicated to Preserving and Understanding Horology"





Dash board Art Deco Clock from a 1937 Art Deco Hudson  
It works too! collection of Phil Goldberg

# Got Time?

Join Us at  
[chapter124.org](http://chapter124.org)

*National Association of Watch & Clock Collectors  
Lone Star Chapter 124*

## APPLICATION/RENEWAL FOR LONE STAR CHAPTER 124, NAWCC

*An educational group dedicated to preserving and understanding horology.*

Complete and send with applicable check made payable to: Lone Star Chapter #124

To Gene Meysenburg 11028 Creekmere, Dallas, TX 75218

Please PRINT:

Mr. \_\_\_ Mrs. \_\_\_ Ms. \_\_\_ (Please check appropriate blank.)

NAME \_\_\_\_\_

NAWCC # \_\_\_\_\_

STREET \_\_\_\_\_ PHONE \_\_\_\_\_

CITY \_\_\_\_\_ STATE \_\_\_\_\_ ZIP CODE \_\_\_\_\_

E-mail: \_\_\_\_\_

I'm most interested in \_\_\_\_\_

Check appropriate box:

☐ New #124 Member

☐ Renew my membership

*Dues are \$10 per year.*

*Yrs @ \$10 =*

*Join/renew for 1-5 years*

To join Chapter #124, you must be an NAWCC member, or have applied for NAWCC membership. Have you applied for National membership, but haven't gotten a membership number? Check here \_\_\_\_\_. (Date of your application/check to National.)

